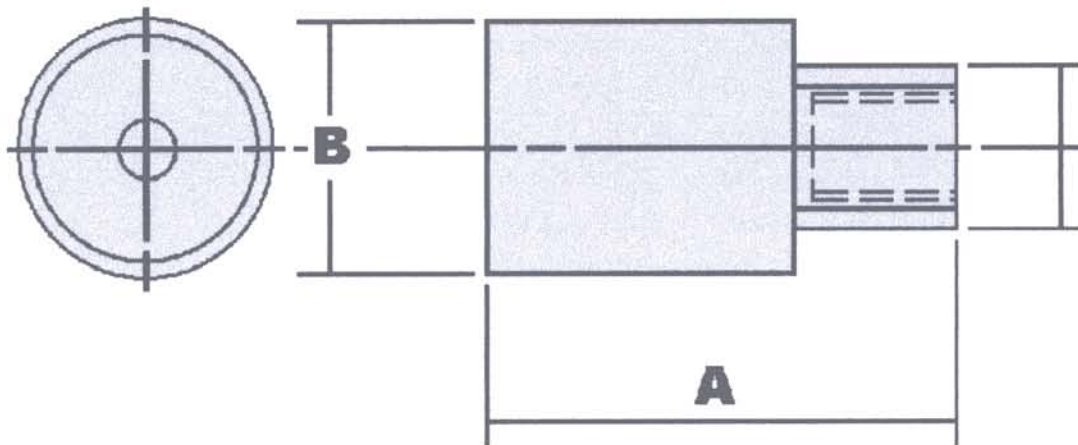


RL Burners

These stainless steel burners are designed for the neon sign industry, but can be used for many general heating applications. They use gas and air or gas, air and oxygen, the flame is very stable and capable of a wide range of adjustment, from sharp needle to a large brush shape, giving a good heat output over its entire range.



RL 81/RL 83 Burners have both 1/8 BSPF and 1/4 BSPM thread connections

| Burner Type | Dimension (mm) | | Port Dia(mm) | BTU/hr Gas/Air |
|-------------|----------------|------|--------------|----------------|
| | A | B | | |
| RL 81 | 30.0 | 20.5 | 2.0 | 3,200 |
| RL 81 | 30.0 | 20.5 | 2.3 | 3,500 |
| RL 81 | 30.0 | 20.5 | 3.0 | 5,300 |
| RL 81 | 30.0 | 20.5 | 5.0 | 7,100 |
| RL 83 | 44.5 | 25.0 | 3.5 | 5,800 |
| RL 83 | 44.5 | 25.0 | 4.0 | 6,200 |
| RL 83 | 44.5 | 25.0 | 4.5 | 6,800 |
| RL 83 | 44.5 | 25.0 | 5.0 | 7,100 |
| RL 83 | 44.5 | 25.0 | 5.5 | 7,600 |